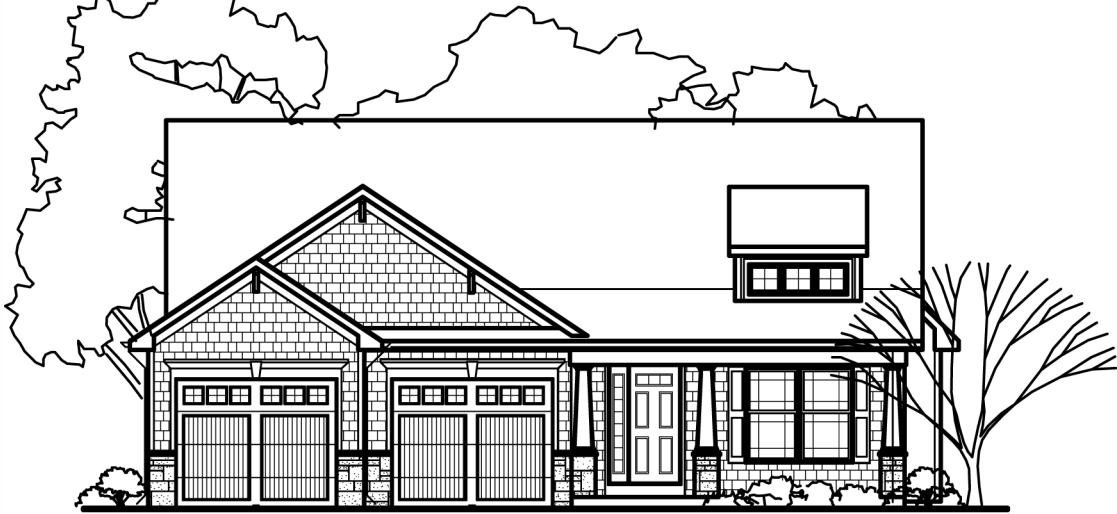
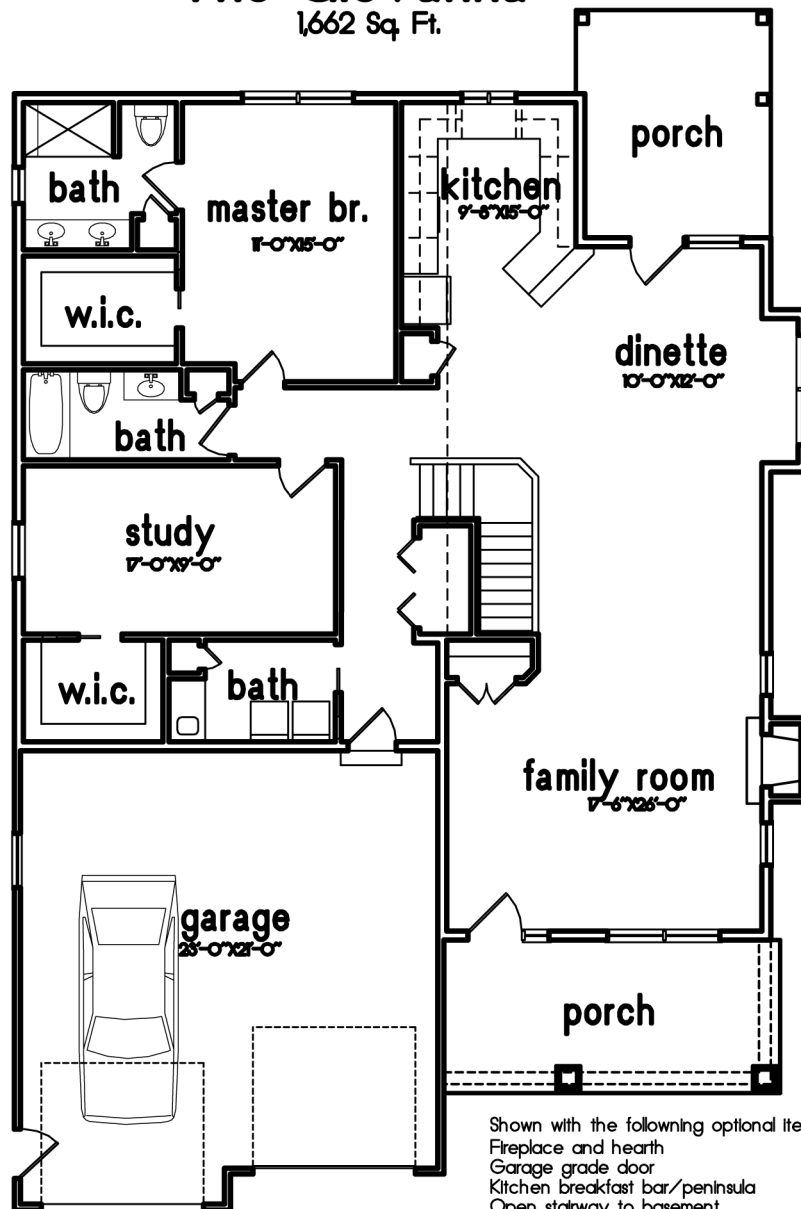


Canalside Developers, Inc



The Giovanna
1,662 Sq. Ft.



Shown with the following optional items:
Fireplace and hearth
Garage grade door
Kitchen breakfast bar/peninsula
Open stairway to basement
Dining room bay

This sheet is for illustrative purposes only and is not part of a legal contract
Dimensions shown are approximate and may vary from completed structure